

# High Capacity Hose Reels

MODEL// SLP-575-BGX

## SP Series

**SP Series "Single Product Delivery" spring driven hose reels are built to handle large hose diameters.** Used in applications demanding large volume delivery in low and medium pressures such as fuel and water. The sturdy box-style frame has heavy duty steel cross supports to all four corners for extra strength and rigidity.

### SP SERIES Offers...

- ✓ Reinforced Steel Frame Provides Maximum Strength & Stability
- ✓ Lubricated Factory-Matched Cartridge-Style Spring Motor
- ✓ Long Lasting Self-Lubricated Flange Bearings
- ✓ Cast Iron Lock Ring With Non-Sparking Bronze Pawl
- ✓ Heavy Duty 1" O.D. Stainless Steel Pinch-Proof Rollers
- ✓ Adjusts To Wall, Floor & Overhead Positions



MOTOR

MANUAL

SPRING

Drive Type

Spring

Media

Air

Water

Oil

Swivel material

Steel

Seal material

Nitrile\*

\*AFLAS on 25mm Models

### LOW PRESSURE // Air & Water

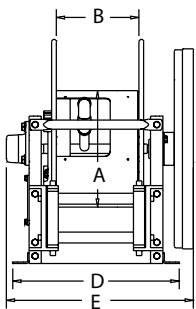
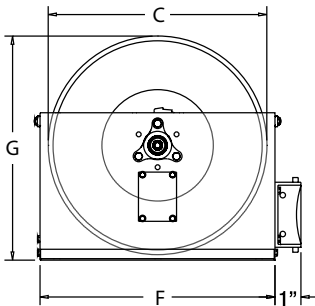
MODEL hose	MODEL no hose	I.D.	O.D.	Length	BAR	Inlet	Outlet	KG hose	KG no hose	Size
SLP-4100-BGX	SLPL-4100-BGX	12mm	17mm	31 m	21	1/2"	1/2"	50	44	1
SLP-550-BGX	SLPL-550-BGX	19mm	29mm	15 m	21	3/4"	3/4"	45	39	2
SLP-575-BGX	SLPL-575-BGX	19mm	29mm	23 m	21	3/4"	3/4"	62	53	3
SLP-5100-BGX	SLPL-5100-BGX	19mm	29mm	31 m	21	3/4"	3/4"	69	57	4
SLP-650-BGX	SLPL-650-BGX	25mm	37mm	15 m	21	1"	1"	63	49	6
SLP-675-BGX	SLPL-675-BGX	25mm	37mm	23 m	21	1"	1"	88	67	7
-	SLPL-750-BGX	32mm	44mm	15 m	18	1.25"	1.25"	-	56	9
-	SLPL-850-BGX	38mm	51mm	15 m	18	1.5"	1.5"	-	63	10

Maximum temp. 65°C Reels without hose can be used for air, water & oil

### MEDIUM PRESSURE // Air, Water & Oil

MODEL hose	MODEL no hose	I.D.	O.D.	Length	BAR	Inlet	Outlet	KG hose	KG no hose	Size
SMP-4100-BGX	SMPL-4100-BGX	12mm	17mm	31 m	140	1/2"	1/2"	63	51	1
SMP-550-BGX	SMPL-550-BGX	19mm	29mm	15 m	105	3/4"	3/4"	49	40	5
SMP-575-BGX	SMPL-575-BGX	19mm	29mm	23 m	105	3/4"	3/4"	69	55	6
SMP-5100-BGX	SMPL-5100-BGX	19mm	29mm	31 m	105	3/4"	3/4"	75	57	6
-	SMPL-650-BGX	25mm	37mm	15 m	70	1"	1"	-	50	6
-	SMPL-675-BGX	25mm	37mm	23 m	70	1"	1"	-	61	9

Reels with hose come with one wire braid hose suitable for air, water & oil with a maximum temp. 99°C



### DIMENSIONS

SIZE	A	B	C	D	E	F	G
1	267	190	508	390	495	264	521
2	267	190	508	390	483	264	521
3	267	190	610	390	483	660	622
4	267	190	610	390	508	660	622
5	267	190	508	390	521	264	521
6	267	190	610	390	533	660	622
7	267	190	711	390	533	762	728
8	267	190	610	390	457	660	622
9	267	190	711	390	457	762	728
10	267	241	711	441	508	762	728



FOR MORE INFORMATION PLEASE CALL ☐

+44 (0) 1536 464 990 or visit [www.crireels.com](http://www.crireels.com)

## DP Series

**DP Series “Dual Product Delivery” spring driven hose reels have two swivel inlets and two outlets for dual hose applications.** Like the SP Series they are built to handle large hose diameters used in applications demanding large volume delivery in low and medium pressures. The sturdy box-style frame has heavy duty steel cross supports to all four corners for extra strength and rigidity.



### DP SERIES Offers...

- ✓ Two Inlets & Two Outlets To Handle Dual Hose Applications
- ✓ Reinforced Steel Frame Provides Maximum Strength & Stability
- ✓ Long Lasting Self-Lubricated Flange Bearings
- ✓ Cast Iron Lock Ring With Non-Sparking Bronze Pawl
- ✓ Non-Corrosive Stainless Steel Pawl Spring
- ✓ Heavy Duty 1” O.D. Stainless Steel Pinch-Proof Rollers
- ✓ Adjusts To Wall, Floor & Overhead Positions

Drive Type	<b>Spring</b>
Media	<b>Air</b>
	<b>Water</b>
	<b>Oil</b>
	<b>Grease</b>
Swivel material	<b>Brass</b>
Seal material	<b>Nitrile</b>

### LOW PRESSURE // Air & Water

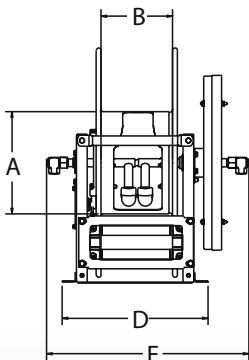
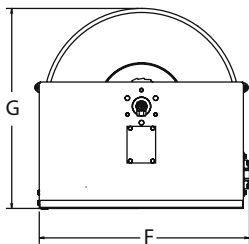
MODEL no hose	I.D.	O.D.	Length	BAR	Inlet	Outlet	KG no hose	Size
DLPL-350-BGX	10mm	17mm	15 m	21	3/8"	3/8"	43	1
DLPL-3100-BGX	10mm	17mm	31 m	21	3/8"	3/8"	53	2
DLPL-450-BGX	12mm	21mm	15 m	21	1/2"	1/2"	44	1
DLPL-4100-BGX	12mm	21mm	31 m	21	1/2"	1/2"	63	3
DLPL-525-BGX	19mm	29mm	8 m	21	3/4"	3/4"	42	4
DLPL-550-BGX	19mm	29mm	15 m	21	3/4"	3/4"	45	5

Two swivel joint inlets and two outlet risers to simultaneously handle equal lengths of two hoses. Hoses can be different diameters, in which case the larger hose diameter determines capacity of the reel.

### MEDIUM PRESSURE // Air, Water & Oil

MODEL no hose	I.D.	O.D.	Length	BAR	Inlet	Outlet	KG no hose	Size
DMPL-350-BGX	10mm	17mm	15 m	175	3/8"	3/8"	45	1
DMPL-3100-BGX	10mm	17mm	31 m	175	3/8"	3/8"	54	2
DMPL-450-BGX	12mm	21mm	15 m	140	1/2"	1/2"	46	1
DMPL-4100-BGX	12mm	21mm	31 m	140	1/2"	1/2"	63	3

Two swivel joint inlets and two outlet risers to simultaneously handle equal lengths of two hoses. Hoses can be different diameters, in which case the larger hose diameter determines capacity of the reel. Maximum temperatures 99° C. For higher temperatures and pressures consult CRI Reels



### DIMENSIONS

SIZE	A	B	C	D	E	F	G
1	267	190	508	390	559	264	521
2	267	190	610	390	264	660	622
3	267	190	711	390	264	762	728
4	267	190	508	390	603	264	521
5	267	190	610	390	603	660	622

# Dual Hydraulic Hose Reels

## MPD, TDMP & 1275HP Series

MPD, TDMP and 1275HP Series "Dual Hydraulic" hose reels have similar features to their related series, but have been redesigned to handle dual hydraulic applications. Choose between spring driven retraction, hand crank or motorized models.

### MPD & TDMP SERIES Offers... 1275HP SERIES Offers...

- ✓ Dual Port Full Flow Swivel
- ✓ One-Sided Supply/Return Hookup
- ✓ Swivel Seals: TEFLON®
- ✓ Designed For Dual Hydraulic Emergency Rescue Systems And Other High Pressure Hydraulic Tools
- ✓ Two High Pressure Full Flow Melanized Steel 1/4" Swivel Inlets
- ✓ Low Profile Outlet Riser & Open Drum Slot Design
- ✓ Swivel Seals: VITON®



MOTOR

MANUAL

SPRING

Drive Type

- Spring
- Manual
- Motor

Media

- Oil

Swivel material

- Steel

Seal material

- Teflon/Viton

### MPD SERIES // Spring Rewind

MODEL hose	MODEL no hose	I.D.	O.D.	Length	BAR	Inlet	Outlet	KG hose	KG no hose	Size
N/A	MPDL-N-150-BGX	6mm	12mm	15 m	210	1/4"	1/4"	-	28	1
MPD-N-330-BGX	MPDL-N-330-BGX	10mm	17mm	9 m	210	3/8"	3/8"	35	28	1
MPD-N-430-BGX	MPDL-N-430-BGX	12mm	21mm	9 m	175	1/2"	1/2"	36	28	1

Reels are furnished standard with dual-hydraulic hose banded together every 1m with power strip-type clamps. Maximum temperatures

### TDMP SERIES // Spring Rewind

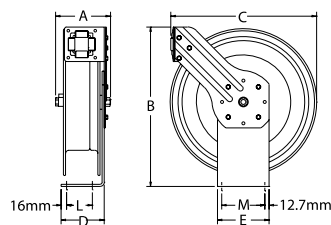
MODEL hose	MODEL no hose	I.D.	O.D.	Length	BAR	Inlet	Outlet	KG hose	KG no hose	Size
TDMP-N-350-BGX	TDMP-L-N-350-BGX	10mm	17mm	15 m	210	3/8"	3/8"	47	36	2
TDMP-N-450-BGX	TDMP-L-N-450-BGX	12mm	19mm	15 m	175	1/2"	1/2"	48	36	2

Reels are furnished standard with dual-hydraulic hose banded together every 1m with power strip-type clamps. Maximum temperatures 99° C

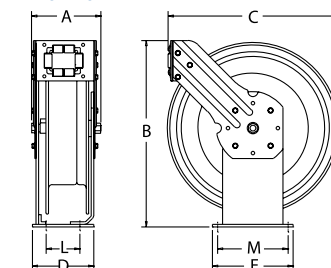
### 1275HP SERIES // Manual & Motor Rewind

MODEL no hose	Rewind Type	Capacity with 6mm hose	Capacity with 10mm hose	BAR	Inlet	KG no hose	Size
1275HPL-(X*)-8	Rim Rewind	41 m	26 m	700	1/4"	17	3
1275HPL-(X*)-8-C	Geared Bevel Crank	41 m	26 m	700	1/4"	20	4
1275HPL-(X*)-8-A	Air Motor	41 m	26 m	700	1/4"	23	5
1275HPL-(X*)-8-E	Electric Motor	41 m	26 m	700	1/4"	31	6
1275HPL-(X*)-12	Rim Rewind	61 m	38 m	700	1/4"	18	7
1275HPL-(X*)-12-C	Geared Bevel Crank	61 m	38 m	700	1/4"	20	8
1275HPL-(X*)-12-A	Air Motor	61 m	38 m	700	1/4"	24	9
1275HPL-(X*)-12-E	Electric Motor	61 m	38 m	700	1/4"	32	10

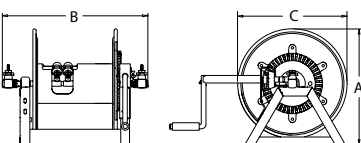
MPD SERIES



TDMP SERIES



1275HP SERIES



### DIMENSIONS

SIZE	A	B	C	D	E	L	M
1	298	533	498	152	152	102	127
2	273	648	584	203	229	178	203
3	460	467	432	-	-	-	-
4	460	467	432	-	-	-	-
5	460	521	432	-	-	-	-
6	460	568	432	-	-	-	-
7	460	578	432	-	-	-	-
8	460	578	432	-	-	-	-
9	460	622	432	-	-	-	-
10	460	670	432	-	-	-	-

### 1275HP OUTLET OPTIONS

Replace (X\*) in model number with one of the following;

- A = 4 JIC Male
- B = 5 JIC Male with 1.5" x 3/8" adapter
- C = 1/4" BSP Female
- D = M14 x 1.5 Female
- 4 = 1/2" NPT Female (standard - no adapter)



# Dual Purpose Hose Reels

MODEL// C-LP-325-325-BGX

## C Series

**C Series "Combination" spring driven hose reels are a combination of two hose reels in one compact assembly.** They are perfect for applications in which two sources are needed to get the job done when space is a critical factor. The single mounting base creates stability and adds to the convenience of one mounting pattern. This series is Also available in air hose/electrical cord combinations.

### C SERIES Offers...

- ✓ Compact Two Reel Assembly
- ✓ One Convenient Mounting Base
- ✓ Each Reel Operates Independently
- ✓ Solid Brass BSP Swivel



MOTOR  
MANUAL  
SPRING

Drive Type	<b>Spring</b>
Media	<b>Air</b>
	<b>Water</b>
	<b>Oil</b>
	<b>Grease</b>
Swivel material	<b>Brass</b>
Seal material	<b>Nitrile</b>

### LOW PRESSURE // Air & Water

MODEL hose	MODEL no hose	I.D.	O.D.	Length	BAR	Inlet	Outlet	KG hose	KG no hose	Size
C-LP-125-125-BGX	C-LPL-125-125-BGX	6mm	12mm	8 m	21	1/4"	1/4"	30	27	1
C-LP-150-150-BGX	C-LPL-150-150-BGX	6mm	12mm	15 m	21	1/4"	1/4"	34	29	1
C-LP-325-325-BGX	C-LPL-325-325-BGX	10mm	17mm	8 m	21	3/8"	3/8"	30	27	2
C-LP-350-350-BGX	C-LPL-350-350-BGX	10mm	17mm	15 m	21	3/8"	3/8"	35	29	2
C-LP-425-425-BGX	C-LPL-425-425-BGX	12mm	21mm	8 m	21	1/2"	1/2"	32	27	3

Maximum temp. 65°C Reels without hose can be used for air, water & oil

### MEDIUM PRESSURE // Air, Water & Oil

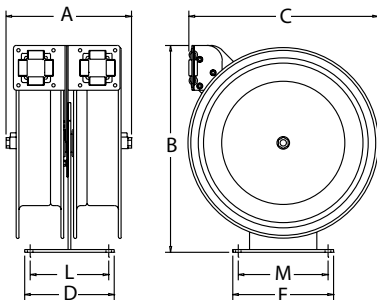
MODEL hose	MODEL no hose	I.D.	O.D.	Length	BAR	Inlet	Outlet	KG hose	KG no hose	Size
C-MP-335-335-BGX	C-MPL-335-335-BGX	10mm	16mm	11 m	210	3/8"	3/8"	39	31	3
C-MP-430-430-BGX	C-MPL-430-430-BGX	12mm	19mm	9 m	175	1/2"	1/2"	38	30	3

Reels with hose come with one wire braid hose suitable for air, water & oil with a maximum temp. 99°C

### HIGH PRESSURE // Air, Water, Oil & Grease

MODEL hose	MODEL no hose	I.D.	O.D.	Length	BAR	Inlet	Outlet	KG hose	KG no hose	Size
C-HP-135-135-BGX	C-HPL-135-135-BGX	6mm	1732"	10 m	350	1/4"	1/4"	38	31	3
C-HP-330-330-BGX	C-HPL-330-330-BGX	10mm	4364"	9 m	280	3/8"	3/8"	37	30	3

Maximum temp. 99°C



### DIMENSIONS

SIZE	A	B	C	D	E	L	M
1	267	464	438	203	229	178	203
2	283	464	438	203	229	178	203
3	164	464	438	203	229	178	203

# Combination & Cable Reels

## C & PC Series

**C Series "Combination" spring driven air hose/electric cord reels are two reels in one compact assembly.** They are perfect for applications that require pneumatic air and an electrical power feed. The single expanded mounting base creates stability and adds to the convenience of one mounting pattern.

**PC Series spring driven "Power Cable" reels are heavy duty, industrial grade power sources.** They replace tangled extension cables and self-retract to increase safety, productivity and efficiency.

### C SERIES Offers...

- ✓ Compact Two Reel Assembly
- ✓ One Convenient Mounting Base
- ✓ Each Reel Operates Independently
- ✓ Swivel Seals: NITRILE

### PC SERIES Offers...

- ✓ Heavy Gauge Powder Coated Steel Components Cover



MODEL// C-L350-5016-X-BGX

MODEL// PC13L-5012 - Light Not Supplied

MOTOR

MANUAL

SPRING

Drive Type	<b>Spring</b>
Media	<b>Air</b>
	<b>Water</b>
	<b>Oil</b>
	<b>Cable</b>
Swivel material	<b>Brass</b>
Seal material	<b>Viton</b>

### C SERIES // Combination Hose & Cable (indoor use only)

MODEL cable/hose	MODEL no hse/cabe	Length	Hose I.D.	Hose O.D.	Cable MM <sup>2</sup>	Cable AWG	Cable Amps	KG cable/hose	KG bare	Size
C-L350-5016-X	C-L350L-5016L-X	15 m	10mm	17mm	1.31mm <sup>2</sup>	16 GA.	13	42	35	1
C-L350-5012-X	C-L350L-5012L-X	15 m	10mm	17mm	3.31mm <sup>2</sup>	12 GA.	20	43	3	1

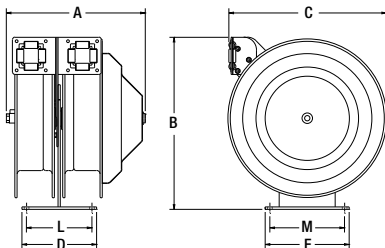
Recognized ††

### PC SERIES // With Cable (indoor use only)

MODEL cable	MODEL no cable	Cores	Length	MM <sup>2</sup>	AWG	Amps	KG	Size
PC13-5016-X	PC13L-5016††	3	15 m	1.31mm <sup>2</sup>	16 GA.	25	14	1
PC19-7516-X	PC19L-7516	3	23 m	1.31mm <sup>2</sup>	16 GA.	13	24	3
PC24-0016-X	PC24L-0016	3	30 m	1.31mm <sup>2</sup>	16 GA.	13	28	4
PC13-5012-X††	PC13L-5012††	3	15 m	3.31mm <sup>2</sup>	12 GA.	25	13	1
PC19-7512-X	PC19L-7512	3	23 m	3.31mm <sup>2</sup>	12 GA.	25	24	3
PC24-0012-X	PC24L-0012	3	30 m	3.31mm <sup>2</sup>	12 GA.	25	29	4
PC17-3510-X††	PC17L-3510	3	10 m	5.26mm <sup>2</sup>	10 GA.	35	28	2
PC17-5010-X††	PC17L-5010††	3	15 m	5.26mm <sup>2</sup>	10 GA.	35	22	2

Recognized ††

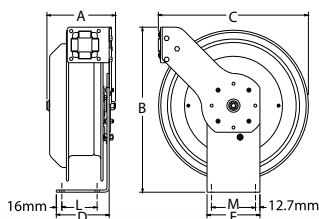
#### C SERIES



#### DIMENSIONS

SIZE	A	B	C	D	E	L	M
1	216	368	349	127	152	76	127
2	279	463	438	152	152	76	127
3	248	533	498	152	152	102	127
4	248	641	584	152	152	102	127

#### PC SERIES



## P-W & SHW Series

**P-W & SHW Series spring driven "Welding" hose reels are the ideal solution for managing bulky twin line welding hose.** The PW Series, like the P Series, is more compact in size and shares the reputation for long lasting performance. The SHW Series has a larger chassis and frame to accommodate longer lengths of welding hose and original Super Hub dual axle support system for increased stability during operation, less vibration and greater structural integrity.



### P-W & SHW SERIES Offers...

- ✓ Designed For Oxy-Acetylene Or "T" Grade Welding Hose
- ✓ Dual Ported Swivel Offers Both Connections From The Same Side Of The Reel
- ✓ Applications Include: MAPP Gas, Propane, & Natural Gas
- ✓ "Super Hub" Dual Axle Support On Models With Size Index #2 & #3
- ✓ Swivel Lock Bracket Ensures Maximum Safety
- ✓ Swivel Seals: VITON®

SPRING MANUAL MOTOR

Drive Type	<b>Spring</b>
Media	<b>Oxy/Acete</b>
Swivel material	<b>Brass</b>
Seal material	<b>Viton</b>

### DUAL HOSE REEL // Oxygen/acetylene

MODEL hose	MODEL no hose	I.D.	O.D.	Length	BAR	Inlet	Outlet	KG hose	KG no hose	Size
P-W-140-BGX	P-WL-140-BGX	6mm	12mm	12 m	14	1/4"	1/4"	23	19	1
SHW-N-150-BGX	SHWL-N-150-BGX	6mm	12mm	15 m	14	1/4"	1/4"	29	24	2
SHW-N-340-BGX	SHWL-N-340-BGX	10mm	17mm	18 m	14	3/8"	3/8"	35	28	3
SHW-N-375-BGX	SHWL-N-375-BGX	10mm	17mm	30 m	14	3/8"	3/8"	38	28	3

\* "Super Hub" Dual Axle Support On Models With Size Index #2 & #3

Also available in **EZ-COIL**  
Available in EZ-Coil®  
Please prefix the desired reel with "EZ-"

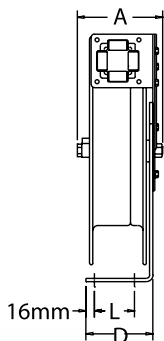
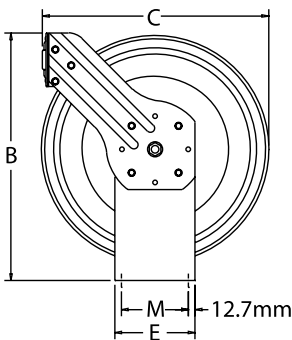


### DUAL HOSE REEL // Variety of fuel gasses

MODEL hose	MODEL no hose	I.D.	O.D.	Length	BAR	Inlet	Outlet	KG hose	KG no hose	Size
P-WT-125-BGX	P-WTL-125-BGX	6mm	12mm	8 m	14	1/4"	1/4"	21	18	1
SHWT-N-150-BGX*	SHWTL-N-150-BGX*	6mm	12mm	15 m	14	1/4"	1/4"	29	24	2
SHWT-N-340-BGX*	SHWTL-N-340-BGX*	10mm	17mm	12 m	14	3/8"	3/8"	36	29	3
SHWT-N-375-BGX*	SHWTL-N-375-BGX*	10mm	17mm	23 m	14	3/8"	3/8"	38	28	3

### DIMENSIONS

SIZE	A	B	C	D	E	L	M
1	216	464	438	152	152	102	127
2	276	533	498	152	152	102	127
3	276	641	584	152	152	102	127



# Side Mount Welding Hose Reels

MODEL// SL17-W-150-BGX

## SW Series

**SW Series spring driven hose reels are compact, versatile and unique in the way they mount and operate.** They feature a simple two-bolt mounting pattern for easy installation and detachment for multiple workstation applications. The 360° hose direction allows the user to operate the reel from front to back, top to bottom, any direction the job demands.

### SW SERIES Offers...

- ✓ 2-Bolt Mounting Pattern Easily Mounts & Detaches For Multiple Work Station Applications
- ✓ 360° Payout Designed For Use From Any Direction
- ✓ Hose Control Bar Is Full Drum Width Preventing Derailment
- ✓ Multi-position Locking Ratchet Secures Hose At Desired Length. Non-locking, Less Ratchet Option Available (Add Suffix -BXC)
- ✓ Models With Hose Include Hose Stop & Protective Spring Guard



MOTOR

MANUAL

SPRING

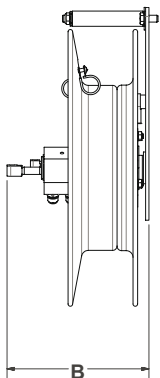
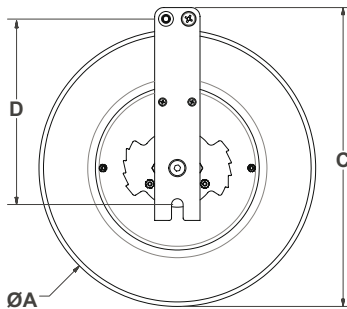
Drive Type	Spring
Media	Oxy/Acete
Swivel material	Brass
Seal material	Viton

### DUAL HOSE REEL // Oxygen/acetylene

MODEL hose	MODEL no hose	Mount	I.D.	O.D.	Length	BAR	Inlet	Outlet	KG hose	KG no hose	Size
SR17W-150-BGX	SR17WL-150-BGX	Right	6mm	12mm	15	14	1/4"	1/4"	17	12	1
SL17W-150-BGX	SL17WL-150-BGX	Left	6mm	12mm	15	14	1/4"	1/4"	17	12	1
SR19W-340-BGX	SR19WL-340-BGX	Right	10mm	17mm	23	14	3/8"	3/8"	24	16	2
SL19W-340-BGX	SL19WL-340-BGX	Left	10mm	17mm	23	14	3/8"	3/8"	24	16	2

### DUAL HOSE REEL // Variety of fuel gasses

MODEL hose	MODEL no hose	Mount	I.D.	O.D.	Length	BAR	Inlet	Outlet	KG hose	KG no hose	Size
SR17WT-150-BGX	SR17WTL-150-BGX	Right	6mm	13mm	15	14	1/4"	1/4"	17	12	1
SL17WT-150-BGX	SL17WTL-150-BGX	Left	6mm	13mm	15	14	1/4"	1/4"	17	12	1
SR19WT-340-BGX	SR19WTL-340-BGX	Right	10mm	17mm	23	14	3/8"	3/8"	24	16	2
SL19WT-340-BGX	SL19WTL-340-BGX	Left	10mm	17mm	23	14	3/8"	3/8"	24	16	2



### MOUNTING BRACKETS

MODELS	For models
15726-13	SR13 & SL13
15726-15	SR15 & SL15
15726-17	SR17 & SL17
15726-19	SR19 & SL19



MODELS	For models
SMB1	SR13, SL13, SR15 & SL15
SMB2	SR17 & SL17
SMB3	SR19 & SL19



### 360° Payout



### Multiple Applications



### DIMENSIONS

SIZE	A	B	C	D
1	432	200	464	330
2	495	241	527	362



FOR MORE INFORMATION PLEASE CALL +44 (0) 1536 464 990 or visit [www.crireels.com](http://www.crireels.com)

# Stainless Steel Hose Reels

MOTOR

MANUAL

SPRING

## SS Series

SS Series "Stainless Steel" hand crank and spring driven hose reels have similar features to their related series, but are constructed of high quality electro-polished stainless steel with stainless steel fluid paths. They offer clean, non-corrosive performance in applications that require it, such as food and chemical processing, marinas, and anywhere that rust, corrosion and contamination thrive.

### SS SERIES Offers...

- ✓ High Quality Electro-Polished Stainless Steel Construction
- ✓ Non-Corrosive Stainless Steel Fluid Path Featuring Stainless Steel Swivel With Non-Toxic Grease



Drive Type	<b>Spring</b>
	<b>Manual</b>
Media	<b>Air,</b>
	<b>Water</b>
	<b>Oil</b>
	<b>Grease</b>
Swivel material	<b>S/Steel</b>
Seal material	<b>Viton</b>

### P, SH & MP SERIES // Air, Water & Oil

MODEL no hose	I.D.	O.D.	Length	BAR	Inlet	Outlet	KG	Size
P-LPL-335-SS-BGX	10mm	17mm	10 m	21	3/8"	3/8"	15	1
P-LPL-350-SS-BGX	10mm	17mm	15 m	21	3/8"	3/8"	18	3
P-LPL-425-SS-BGX	12mm	21mm	8 m	21	1/2"	1/2"	18	2
SHL-N-350-SS-BGX	10mm	17mm	15 m	21	3/8"	3/8"	20	3
SHL-N-450-SS-BGX	12mm	21mm	15 m	21	1/2"	1/2"	21	4
SHL-N-525-SS-BGX	19mm	29mm	8 m	21	3/4"	3/4"	20	4
MPL-N-350-SS-BGX	10mm	17mm	15 m	210	3/8"	3/8"	24	4
MPL-N-450-SS-BGX	12mm	21mm	15 m	210	1/2"	1/2"	24	4

### T SERIES // Air, Water & Oil

MODEL no hose	I.D.	O.D.	Length	BAR	Inlet	Outlet	KG	Size
TSHL-N-4100-SS-BGX	12mm	21mm	30 m	21	1/2"	1/2"	36	8
TSHL-N-550-SS-BGX	19mm	29mm	15 m	21	3/4"	3/4"	32	8

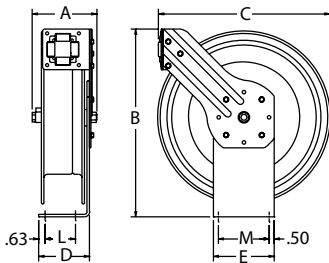
### EN SERIES // Air, Water & Oil

MODEL no hose	I.D.	O.D.	Length	BAR	Inlet	Outlet	KG	Size
ENL-N-350-SS-BGX	10mm	17mm	15 m	21	3/8"	3/8"	26	6
ENL-N-450-SS-BGX	12mm	21mm	15 m	21	1/2"	1/2"	28	6

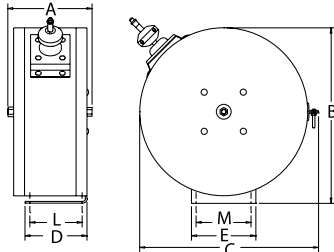
### 100 SERIES // Air, Water & Oil

MODEL no hose	I.D.	O.D.	Length	BAR	Inlet	Outlet	KG	Size
112-4-75-SS-BGX	12mm	21mm	23 m	75	1/2"	1/2"	10	9
117-4-225-SS-BGX	12mm	21mm	68 m	225	1/2"	1/2"	14	10
117-5-100-SS-BGX	19mm	29mm	31 m	100	3/4"	3/4"	16	11

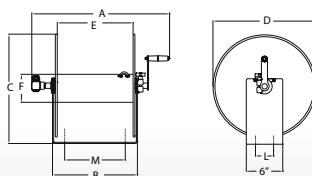
P, SH, MP & T SERIES



EN SERIES



100 SERIES



### DIMENSIONS

SIZE	A	B	C	D	E	F	G	L	M
1	156	464	438	152	152	-	-	102	127
2	179	464	438	152	152	-	-	102	127
3	222	533	498	152	152	-	-	102	127
4	235	533	498	152	152	-	-	102	127
5	179	476	476	152	152	-	-	102	127
6	235	552	552	152	152	-	-	102	127
7	248	538	498	203	229	-	-	203	203
8	248	648	584	203	229	-	-	203	203
9	140	164	305	356	590	152	330	76	10"
10	140	164	432	356	590	152	457	76	10"
11	140	164	432	356	603	152	457	76	10"





# Stainless Steel Hose Reels

## SS Series

**1125 & 1175 Series stainless steel hand crank and motorized hose reels have the features demanded by industry professionals.** The industry preferred design features a sturdy one piece all welded "A" frame base, low profile outlet riser and open drum slot design provides a non-crimping, flat smooth hose wrap.

### 1125 & 1175 SERIES Offers...

- ✓ Stainless Steel Frame, drum and flanges
- ✓ Solid Stainless Steel Swivel
- ✓ Viton Seals Suitable For Diesel & Petrol



MOTOR

MANUAL

SPRING

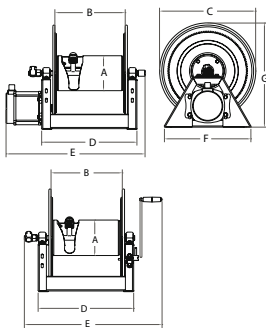
Drive Type	<b>Manual</b>
	<b>Motor</b>
Media	<b>Air</b>
	<b>Water</b>
	<b>Oil</b>
Swivel material	<b>S/Steel</b>
Seal material	<b>Viton</b>

### 1125 HAND CRANK MODELS // Air & Water & Oil

MODEL no hose	I.D.	O.D.	Length	I.D.*	O.D.*	Length*	BAR	Inlet F NPT 90°	Outlet F NPT	KG	Size
1125-4-100-SS	12mm	21 mm	30 m	10mm	19	42 m	300	1/2"	1/2"	16	1
1125-4-200-SS	12mm	21 mm	60 m	10mm	19	91 m	300	1/2"	1/2"	18	2
1125-4-325-SS	12mm	21 mm	99 m	10mm	19	136 m	300	1/2"	1/2"	22	3
1125-4-450-SS	12mm	21 mm	136 m	10mm	19	189 m	300	1/2"	1/2"	24	4
1125-4-500-SS	12mm	21 mm	152 m	10mm	19	212 m	300	1/2"	1/2"	26	5
1125-5-50-SS	19mm	29 mm	15 m	12mm	22	30 m	300	3/4"	3/4"	17	6
1125-5-100-SS	19mm	29 mm	30 m	12mm	22	61 m	300	3/4"	3/4"	19	7
1125-5-175-SS	19mm	29 mm	53 m	12mm	22	98 m	300	3/4"	3/4"	23	8
1125-5-200-SS	19mm	29 mm	61 m	12mm	22	136 m	300	3/4"	3/4"	25	9
1125-5-250-SS	19mm	29 mm	76 m	12mm	22	152 m	300	3/4"	3/4"	27	10
1125-6-35-SS	25mm	37 mm	10 m	19mm	32	15 m	300	1"	1"	23	11
1125-6-50-SS	25mm	37 mm	15 m	19mm	32	23 m	300	1"	1"	25	12
1125-6-75-SS	25mm	37 mm	23 m	19mm	32	36 m	300	1"	1"	28	13
1125-6-100-SS	25mm	37 mm	30 m	19mm	32	45 m	300	1"	1"	31	14

\* Adapter required  
For dimensions & drawings please see page 26

1125 SERIES

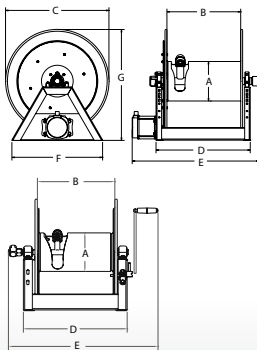


### 1175 HAND CRANK MODELS // Air & Water & Oil

MODEL no hose	I.D.	O.D.	Length	I.D.*	O.D.*	Length*	BAR	Inlet F NPT 90°	Outlet F NPT	KG	Size
1175-6-50-SS	25mm	37mm	15 m	19mm	29mm	30 m	300	1"	1"	30	1
1175-6-100-SS	25mm	37mm	30 m	19mm	29mm	45 m	300	1"	1"	32	2
1175-6-125-SS	25mm	37mm	38 m	19mm	29mm	61 m	300	1"	1"	33	3
1175-6-135-SS	25mm	37mm	41 m	19mm	29mm	53 m	300	1"	1"	32	6
1175-6-150-SS	25mm	37mm	45 m	19mm	29mm	76 m	300	1"	1"	34	4
1175-6-200-SS	25mm	37mm	60 m	19mm	29mm	91 m	300	1"	1"	38	5

\* Adapter required  
For dimensions & drawings please see page 27

1185 SERIES



For dimensions & drawings please see page 26

### MOTORS DRIVEN MODELS // Add the suffix to hand crank models above

Suffix #	Motor Type	Description	Extra KG
A	AIR #4 GAST	Comp. Air Motor	4
E	ELECTRIC - 12V DC	1/3 HP	6
EB	ELECTRIC - 24V DC	1/2 HP	12
ED	ELECTRIC Explosion Proof	1/2 HP	12
EA	ELECTRIC Explosion Proof - 115V DC	1/2 HP	12
H	HYDRAULIC	End Ported 9/16-18 UNF	3
C	CRANK	Bevel Gear	2



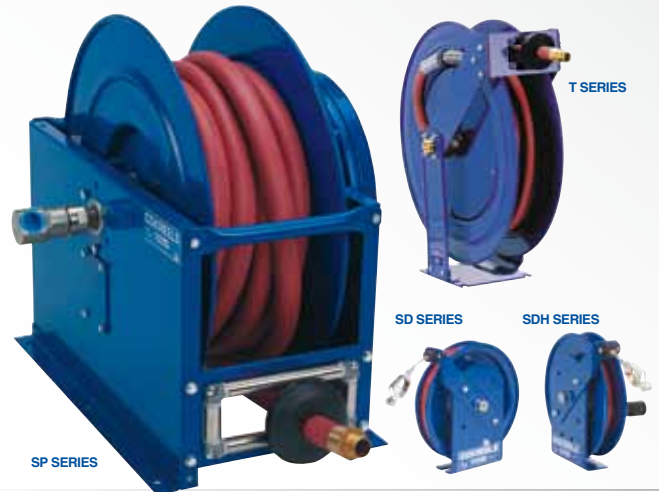
## T, SP & SD Series

**SH, T SP Series "Fuel" spring driven hose reels have been selected specifically for fuel delivery.** The SH, T & SP Series are suitable for a wide variety of fuel applications. The solid construction allows the reels to be used for vehicle mount.

**Static discharge reels are the ideal accompaniment** and designed to be used in combustible environments where static build up could ignite a spark and subsequent explosion.

### T & SP SERIES Offers... SD SERIES Offers...

- ✓ Solid Steel Swivel
- ✓ Viton Seals Suitable For Diesel & Petrol
- ✓ High Visibility Orange Vinyl Cable Cover
- ✓ Includes Cable, Stop & 50 Amp Grounding Clamp (100 Amp Copper Grounding Clamp Available)
- ✓ Non-Sparking Locking Ratchet Secures Cable At Desired Length

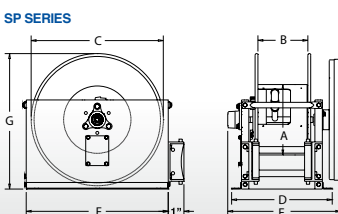
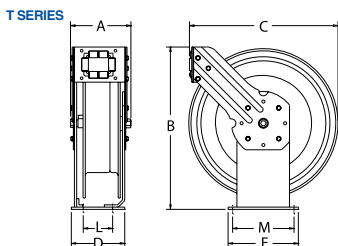


Drive Type	<b>Spring</b>
	<b>Manual</b>
Media	<b>Fuel</b>
	<b>Cable</b>
Swivel material	<b>Steel</b>
Seal material	<b>Viton</b>



### DIMENSIONS

SIZE	A	B	C	D	E	F	G
1	248	648	584	203	229	178	203
2	164	648	610	203	229	178	203
3	254	648	584	203	229	178	203
4	267	190	610	390	533	660	622
5	267	190	711	390	533	762	728
6	267	190	711	390	457	762	728
7	102	305	279	-	-	-	-
8	102	1127	368	-	-	-	-
9	279	292	146	127	30	-	-



### T Series // Fuel

MODEL hose	MODEL no hose	I.D.	O.D.	Length	BAR	Inlet	Outlet	KG hose	KG no hose	Size
TSHF-N-550-BGX	TSHL-N-550-BGX	19mm	29mm	15 m	21	3/4"	3/4"	41	32	1
TSHF-N-575-BGX	TSHL-N-575-BGX	19mm	29mm	23 m	21	3/4"	3/4"	48	33	2
TSHF-N-635-BGX	TSHL-N-635-BGX	25mm	37mm	10 m	21	1"	1"	43	34	3

Not suitable for Euro 95/98 type fuel

### SP Series // Fuel

MODEL hose	MODEL no hose	I.D.	O.D.	Length	BAR	Inlet	Outlet	KG hose	KG no hose	Size
-	SLPL-650-BGX	25mm	37mm	15 m	21	1"	1"	-	49	4
SLPF-650-BGX	-	25mm	37mm	15 m	21	1"	1"	64	-	4
-	SLPL-675-BGX	25mm	37mm	23 m	21	1"	1"	-	67	5
-	SLPL-750-BGX	32mm	46mm	15 m	18	1.25"	1.25"	-	50	6

Not suitable for Euro 95/98 type fuel

### STATIC DISCHARGE REELS

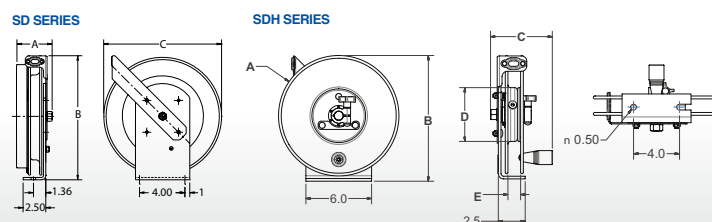
**SD & SDH Series "Static Discharge"** reels are designed to be used in combustible environments where the static buildup could ignite a spark and subsequent explosion.

#### SD Series // Spring rewind

MODEL cable	cable	O.D.	Length	KG	MODEL no cable	KG	Size
SD-35	Galvinised	4mm	10 m	8	-	-	7
SD-50	Galvinised	4mm	15 m	9	SDL-50	8	7
SD-75	Galvinised	4mm	23 m	14	-	-	8
SD-100	Galvinised	4mm	31 m	15	SDL-100	13	8
SD-35-1	Stainless Steel	4mm	10 m	8	-	-	7
SD-50-1	Stainless Steel	4mm	15 m	9	-	-	7
SD-75-1	Stainless Steel	4mm	23 m	14	-	-	8
SD-100-1	Stainless Steel	4mm	31 m	15	-	-	8

#### SDH Series // Manual rewind

MODEL cable	cable	O.D.	Length	KG	MODEL no cable	KG	Size
SDH-100	Galvinised	4mm	30 m	6	-	-	9
SDH-200	Galvinised	4mm	60 m	7	SDHL-200	5	9
SDH-100-1	Stainless Steel	4mm	30 m	6	-	-	9
SDH-200-1	Stainless Steel	4mm	60 m	6	-	-	9



## 1125, 1185 & 1195 Series

1125, 1185 & 1195 Series "Fuel" hose reels have been selected specifically for fuel delivery. The 1125, 1185 & 1195 Series are suitable for a wide variety of fuel applications the require a large capacity hose.

Static discharge reels are the ideal accompaniment and designed to be used in combustible environments where static build up could ignite a spark and subsequent explosion.

### 1125, 1185 & 1195 SERIES Offers...

- ✓ Solid Steel Swivel (Zinc Plated above 25mm - 1")
- ✓ Viton Seals Suitable For Diesel & Petrol
- ✓ Hose I.D. Up to 51mm (2") for maximum flow



MOTOR  
MANUAL  
SPRING

Drive Type	Manual
	Motor
Media	Fuel
Swivel material	Steel
Seal material	Viton

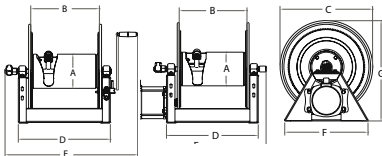
Also available in  
**STAINLESS STEEL**  
Please see page 20 & 21

### 1125, 1185 & 1195 SERIES // Fuel

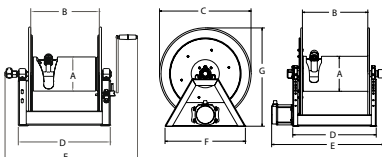
MODEL no hose	I.D.	O.D.	Length	I.D.*	O.D.*	Length*	BAR	Inlet F NPT 90°	Outlet F NPT	KG	Size
1125-5-50	19mm	29mm	15 m	12mm	17mm	30 m	200	3/4"	3/4"	17	1
1125-5-100	19mm	29mm	30 m	12mm	17mm	61 m	200	3/4"	3/4"	19	2
1125-5-175	19mm	29mm	53 m	12mm	17mm	98 m	200	3/4"	3/4"	23	3
1125-5-200	19mm	29mm	61 m	12mm	17mm	136 m	200	3/4"	3/4"	25	4
1125-5-250	19mm	29mm	76 m	12mm	17mm	152 m	200	3/4"	3/4"	27	5
1125-6-35	25mm	37mm	11 m	19mm	29mm	15 m	200	1"	1"	23	6
1125-6-50	25mm	37mm	15 m	19mm	29mm	23 m	200	1"	1"	25	7
1125-6-75	25mm	37mm	23 m	19mm	29mm	36 m	200	1"	1"	28	8
1125-6-100	25mm	37mm	30 m	19mm	29mm	45 m	200	1"	1"	31	9
1185-1124	38mm	51mm	15 m	32mm	44mm	23 m	41	1.5"	1.5"	35	10
1185-1524	38mm	51mm	23 m	32mm	44mm	30 m	41	1.5"	1.5"	37	11
1185-2020	38mm	51mm	20 m	32mm	44mm	24 m	41	1.5"	1.5"	32	12
1185-2024	38mm	51mm	30 m	32mm	44mm	38 m	41	1.5"	1.5"	43	13
1185-2028	38mm	51mm	38 m	32mm	44mm	55 m	41	1.5"	1.5"	49	14
1185-2528	38mm	51mm	46 m	32mm	44mm	67 m	41	1.5"	1.5"	55	15
1185-3324	38mm	51mm	53 m	32mm	44mm	68 m	41	1.5"	1.5"	70	16
1185-3328	38mm	51mm	76 m	32mm	44mm	99 m	41	1.5"	1.5"	77	17
1195-2428	51mm	65mm	27 m	38mm	51mm	41 m	41	2"	2"	77	18
1195-3228	51mm	65mm	38 m	38mm	51mm	53 m	41	2"	2"	99	19

Not suitable for Euro 95/98 type fuel \*Adapter required

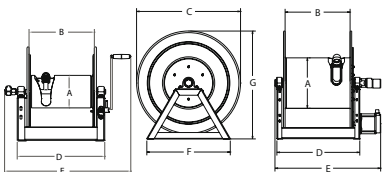
#### 1125 SERIES



#### 1185 SERIES



#### 1195 SERIES



### MOTORS DRIVEN MODELS // Add the suffix to hand crank models above

Suffix #	Motor Type	Description	Extra KG
A	AIR #4 GAST	Comp. Air Motor	4
E	ELECTRIC - 12V DC	1/3 HP	6
EB	ELECTRIC - 24V DC	1/2 HP	12
ED	ELECTRIC Explosion Proof	1/2 HP	12
EA	ELECTRIC Explosion Proof - 115V DC	1/2 HP	12
H	HYDRAULIC	End Ported 9/16-18 UNF	3

### DIMENSIONS

SIZE	A	B	C	D	E Crank	E Electirc	E Air	F	G Crank	G Electric	G Air
1	159	152	445	289	540	467	419	385	460	476	476
2	159	305	445	441	692	619	264	385	460	476	476
3	159	457	445	594	845	770	728	385	460	476	476
4	159	610	445	746	997	924	876	385	460	476	476
5	159	711	445	848	1098	1026	978	385	460	476	476
6	159	241	445	378	641	556	508	385	460	476	476
7	159	394	445	530	794	708	660	385	460	476	476
8	159	559	445	695	959	873	364	385	460	476	476
9	159	711	445	848	1111	1026	978	385	460	476	476
10	267	292	610	292	611	589	617	564	635	-	-
11	267	394	610	535	713	766	720	564	635	-	-
12	267	292	508	650	827	881	833	498	549	-	-
13	267	508	610	636	827	881	833	564	635	-	-
14	267	508	711	636	827	881	833	622	737	-	-
15	267	635	711	764	954	1008	960	568	737	-	-
16	267	838	610	967	1157	1211	1163	622	635	-	-
17	267	838	711	967	1157	1211	1163	622	737	-	-
18	394	610	711	752	876	876	876	622	768	-	-
19	394	813	711	955	464	464	1079	622	768	-	-



# Compact Swivel Mount Hose Reels

## 100 & SM Series

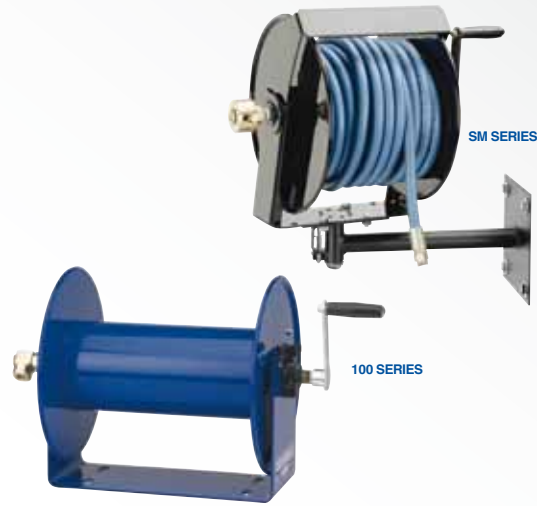
**100 Series & SM "Side Mount" hand crank hose reels are lightweight, compact, versatile reels.** Save time and effort while increasing the safety of your work environment. The sturdy "U" shaped frame and all steel construction make this an extremely robust yet compact reel. All listed models are supplied less hose. Stainless steel models are available.

### 100 SERIES Offers...

- ✓ Light Weight Compact Design
- ✓ Direct Hand Crank Action
- ✓ Brake Assembly Provides Adjustable Friction To Brake Or Lock The Drum

### SM SERIES Offers...

- ✓ Unique Hose Control Bar Keeps Hose From Slipping Off From Any Direction
- ✓ Forward-Weighted Design Ensures Rotation In Direction Of Use
- ✓ Optional 8-Position Swivel Mount Wall Mount Bracket With Lock Pin
- ✓ Brake Assembly Provides Adjustable Friction To Brake Or Lock The Drum



Drive Type

Manual

Media

Air

Water

Oil

Grease

Swivel material

Brass

Seal material

Nitrile

Also available in  
**STAINLESS STEEL**  
Please see page 20 & 21

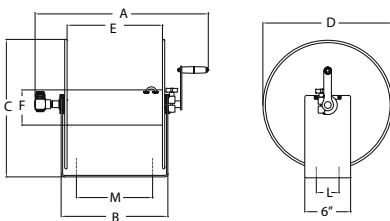
### 100 SERIES // Air & Water

MODEL no hose	I.D.	O.D.	Length	BAR	Inlet	Outlet	KG	Size
112-3-100	10mm	17mm	30 m	280	3/8"	3/8"	9	2
112-3-150	10mm	17mm	45 m	280	3/8"	3/8"	10	3
117-3-250	10mm	17mm	76 m	280	3/8"	3/8"	14	4
112-4-75	12mm	21mm	23 m	280	1/2"	1/2"	10	7
117-4-225	12mm	21mm	68 m	280	1/2"	1/2"	14	8
117-4-350	12mm	21mm	106 m	280	1/2"	1/2"	17	9
117-5-100	12mm	21mm	30 m	280	1/2"	1/2"	16	10

### 100 SERIES DIMENSIONS

SIZE	A	B	C	D	E	F	L	M
1	362	152	330	305	114	140	76	102
2	464	241	330	305	203	140	76	140
3	578	356	330	305	164	140	76	254
4	464	241	457	432	203	140	76	140
5	578	356	457	432	164	140	76	254
6	718	495	457	432	457	140	76	394
7	590	356	457	432	164	140	76	254

100 SERIES



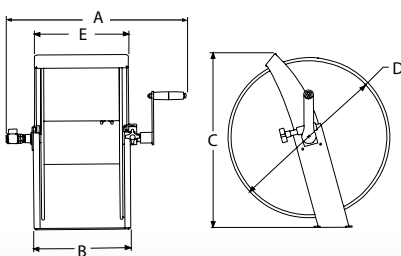
### SM SERIES // Air & Water

MODEL no hose	I.D.	O.D.	Length	BAR	Inlet	Outlet	KG no hose	Size
SM12-3-100-BGX	10mm	17mm	30 m	280	3/8"	3/8"	7	1
SM17-3-250-BGX	10mm	17mm	70 m	280	3/8"	3/8"	12	2
SM17-4-125-BGX	12mm	17mm	38 m	280	1/2"	1/2"	12	3

### SM SERIES DIMENSIONS

SIZE	A	B	C	D	E
1	464	260	343	305	254
2	483	260	470	432	254
3	483	260	470	432	254

SM SERIES



### SM SERIES MOUNTING BRACKETS

Pivoting base for wall mounting only. Heavy gauge steel construction, powder coated crinkle black, includes rigid arm with 8 position locking pivot base.



Bracket sold separately  
Part number: SMK-202

# Portable Hose Reels

## DM & CM Series

**DM Series "Dolly Mount" & CM Series "Caddy Mount" hand crank hose reels offer lightweight, compact portability for long lengths of hose.** Eliminate the task of manually coiling and uncoiling hose and easily transport it to the job site on wheels. Also, a 4' inlet hose with 3/4" female fitting and male garden adaptor is available with this series for use with garden hose. See options below.

### DM SERIES Offers...

- ✓ High-Quality Two Piece 1 1/4" Steel Tube Frame Structure
- ✓ Solid 8" Rubber Tires For Easy Transport
- ✓ Rubber Front Feet Prevent Reel From Slipping Forward
- ✓ Removable Handle Allows Compact Storage
- ✓ Direct Hand Crank Rewind Design
- ✓ Brake Assembly Provides Adjustable Friction To Brake Or Lock The Drum



MOTOR

MANUAL

SPRING

Drive Type

Manual

Media

Air

Water

Swivel material

Brass

Seal material

Viton

### DM SERIES // Air & Water

MODEL no hose	I.D.	O.D.	Length	I.D.*	O.D.*	Length*	BAR	Inlet	Outlet	KG	Size
117-3-200-DM	10mm	17mm	61 m	-	-	-	280	3/8"	3/8"	17	1
117-4-225-DM	12mm	21mm	68 m	10mm	17mm	100 m	280	1/2"	1/2"	18	2

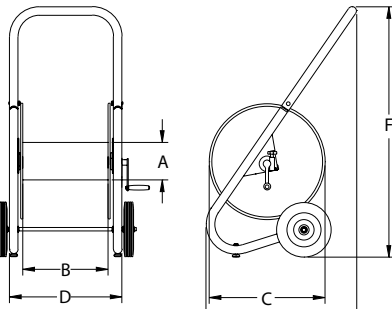
\* Adapter required

### CM SERIES // Air, Water

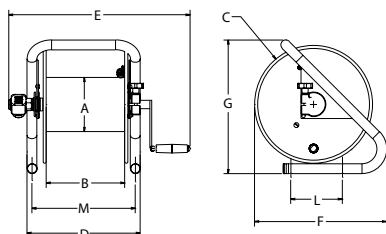
MODEL no hose	I.D.	O.D.	Length	I.D.*	O.D.*	Length*	BAR	Inlet	Outlet	KG	Size
112-3-100-CM	10mm	17mm	30 m	-	-	-	280	3/8"	3/8"	8	3
112-3-150-CM	10mm	17mm	45 m	-	-	-	280	3/8"	3/8"	10	4
117-4-225-CM	12mm	22mm	68 m	10mm	17mm	100 m	280	1/2"	1/2"	13	5

\* Adapter required

DM SERIES



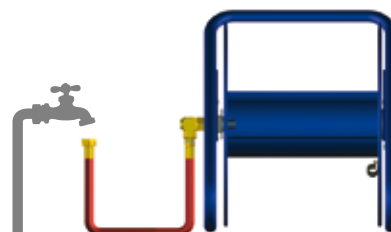
CM SERIES



### DIMENSIONS

SIZE	A	B	C	D	E	F	G	L	M
1	140	203	432	305	518	1016	483	-	-
2	140	164	432	425	632	1016	483	-	-
3	140	203	305	305	467	330	349	76	152
4	140	164	305	419	273	330	349	76	267
5	140	164	432	419	587	451	483	76	267

### GARDEN HOSE KIT



With the Garden Hose Kit you are able to connect any hose to a reel with 1/2" plumbing. You will be able to use any garden hose for everything from watering plants to washing your car

**KIT INCLUDES:**  
NPT to Garden Hose Adaptor & Adaptor Hose



FOR MORE INFORMATION PLEASE CALL

+44 (0) 1536 464 990 or visit [www.crireels.com](http://www.crireels.com)

# Hand Crank & Motor Driven Reels

MOTOR  
MANUAL  
SPRING

## 1125 Series

**1125 Series hand crank and motorized hose reels have the features demanded by industry professionals.** The industry preferred design features a sturdy one piece all welded "A" frame base, low profile riser and open drum slot design provides a non-crimping, flat smooth hose wrap.

### 1125 SERIES Offers...

- ✓ One Piece All Welded Steel "A" Frame Construction
- ✓ Low Profile Riser & Open Drum Slot For Smooth, Even Hose Wraps
- ✓ Direct Gear Drive On Motor Driven Models - No Chains
- ✓ Permanently Lubricated Pillow Block Bearings For Smooth Rotation
- ✓ Long-Handled Lock Pin Secures Reel From Rotation
- ✓ Adjustable Friction Brake Assembly To Brake Or Lock The Drum
- ✓ Brass BSP Swivel Inlet Machined From Solid (Zinc Plated Steel On 1" Models)



Drive Type	<b>Manual</b>
	<b>Motor</b>
Media	<b>Air,</b>
	<b>Water</b>
	<b>Oil</b>
Swivel material	<b>Brass</b>
Seal material	<b>Viton</b>

Also available in  
**STAINLESS STEEL**  
Please see page 20 & 21

### 1125 HAND CRANK MODELS // Air & Water & Oil

MODEL no hose	I.D.	O.D.	Length	I.D.*	O.D.*	Length*	BAR	Inlet F NPT 90°	Outlet F NPT	KG	Size
1125-4-100	12mm	21 mm	30 m	10mm	17mm	42 m	210	1/2"	1/2"	16	1
1125-4-200	12mm	21 mm	61 m	10mm	17mm	91 m	210	1/2"	1/2"	18	2
1125-4-325	12mm	21 mm	99 m	10mm	17mm	136 m	210	1/2"	1/2"	22	3
1125-4-450	12mm	21 mm	136 m	10mm	17mm	189 m	210	1/2"	1/2"	24	4
1125-4-500	12mm	21 mm	152 m	10mm	17mm	212 m	210	1/2"	1/2"	26	5
1125-5-50	19mm	29 mm	15 m	12mm	21mm	30 m	210	3/4"	3/4"	17	6
1125-5-100	19mm	29 mm	30 m	12mm	21mm	61 m	210	3/4"	3/4"	19	7
1125-5-175	19mm	29 mm	53 m	12mm	21mm	98 m	210	3/4"	3/4"	23	8
1125-5-200	19mm	29 mm	61 m	12mm	21mm	136 m	210	3/4"	3/4"	25	9
1125-5-250	19mm	29 mm	76 m	12mm	21mm	152 m	210	3/4"	3/4"	27	10
1125-6-35	25mm	37 mm	10 m	19mm	29mm	15 m	210	1"	1"	23	11
1125-6-50	25mm	37 mm	15 m	19mm	29mm	23 m	210	1"	1"	25	12
1125-6-75	25mm	37 mm	23 m	19mm	29mm	36 m	210	1"	1"	28	13
1125-6-100	25mm	37 mm	30 m	19mm	29mm	45 m	210	1"	1"	31	14

### MOTORS DRIVEN MODELS // Add the suffix to hand crank models above

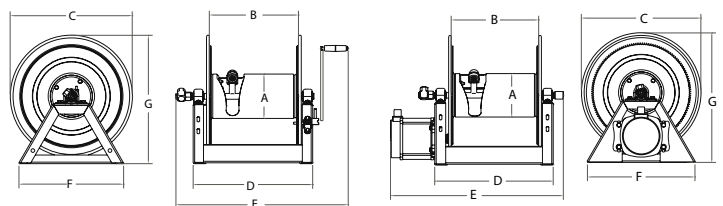
Suffix #	Motor Type	Description	Extra KG
A	AIR #4 GAST	Comp. Air Motor	4
E	ELECTRIC - 12V DC	1/3 HP	6
EB	ELECTRIC - 24V DC	1/2 HP	12
ED	ELECTRIC Explosion Proof	1/2 HP	12
EA	ELECTRIC Explosion Proof - 115V DC	1/2 HP	12
H	HYDRAULIC	End Ported 9/16-18 UNF	3

### PORTABLE CARTS & CARRY HANDLES

Model	Portable Cart for
PR-1125-6	1125-4-100 & 1125-5-50
PRP-1125-6	1125-4-100
PR-1125-12	1125-4-200
PRP-1125-12	1125-4-200

Model	Carry handles for
PR-1125-HC	1125-4-100 & 1125-5-50



### DIMENSIONS

SIZE	A	B	C	D	Crank E	Elec E	Air E	F	Crank G	Elec G	Air G
1	159	152	445	289	552	467	419	385	460	476	476
2	159	305	445	441	705	619	264	385	460	476	476
3	159	457	445	594	857	770	728	385	460	476	476
4	159	610	445	746	1010	924	876	385	460	476	476
5	159	711	445	848	1111	1025	978	385	460	476	476
6	159	152	445	289	540	467	419	385	460	476	476
7	159	305	445	441	692	619	264	385	460	476	476
8	159	457	445	594	845	770	728	385	460	476	476
9	159	610	445	746	997	924	876	385	460	476	476
10	159	711	445	848	1098	1026	978	385	460	476	476
11	159	241	445	378	641	556	508	385	460	476	476
12	159	394	445	530	794	708	660	385	460	476	476
13	159	559	445	695	959	873	364	385	460	476	476
14	159	711	445	848	1111	1026	978	385	460	476	476



# Hand Crank & Motor Driven Reels

## 1175 Series

1175 Series hand crank and motorized hose reels, like the 1125 Series, is an industry preferred design built with a larger chassis for larger hose capacities and hose diameters. They feature a sturdy one piece all welded "A" frame base, low profile outlet riser open drum slot design for smooth even hose wraps around the drum.

### 1175 SERIES Offers...

- ✓ One Piece All Welded Steel "A" Frame Construction
- ✓ Low Profile Riser & Open Drum Slot For Smooth, Even Hose Wraps
- ✓ Solid Steel Crank With Smooth Round Handle
- ✓ Long-Handled Lock Pin Secures Reel From Rotation
- ✓ Adjustable Friction Brake Assembly To Brake Or Lock The Drum
- ✓ Chain & Sprocket Drive
- ✓ Zinc Plated Steel Swivels



MOTOR

MANUAL

SPRING

Drive Type

- Manual
- Motor

Media

- Air
- Water
- Oil

Swivel material

Steel

Seal material

Aflas

### 1175 HAND CRANK MODELS // Air & Water, oil & fuel

MODEL no hose	I.D.	O.D.	Length	I.D.*	O.D.*	Length*	BAR	Inlet F NPT 90°	Outlet F NPT	KG	Size
1175-6-50	25mm	37mm	15 m	19mm	32mm	30 m	210	1"	1"	30	1
1175-6-100	25mm	37mm	30 m	19mm	32mm	45 m	210	1"	1"	32	2
1175-6-125	25mm	37mm	38 m	19mm	32mm	61 m	210	1"	1"	33	3
1175-6-135	25mm	37mm	41 m	19mm	32mm	53 m	210	1"	1"	32	6
1175-6-150	25mm	37mm	45 m	19mm	32mm	76 m	210	1"	1"	34	4
1175-6-200	25mm	37mm	60 m	19mm	32mm	91 m	210	1"	1"	38	5

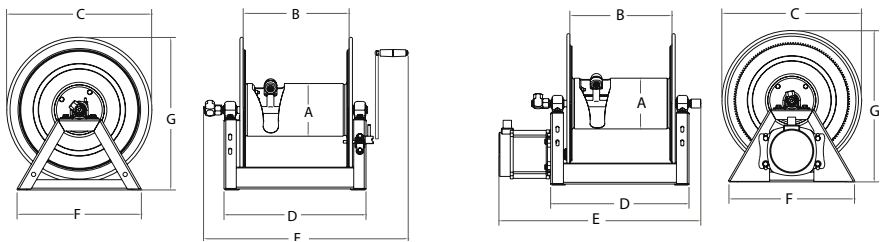
### MOTORS DRIVEN MODELS // Add the suffix to hand crank models above

Suffix #	Motor Type	Description	Extra KG
A	AIR #4 GAST	Comp. Air Motor	4
E	ELECTRIC - 12V DC	1/3 HP	6
EB	ELECTRIC - 24V DC	1/2 HP	12
ED	ELECTRIC Explosion Proof	1/2 HP	12
EA	ELECTRIC Explosion Proof - 115V DC	1/2 HP	12
H	HYDRAULIC	End Ported 9/16-18 UNF	3
C	CRANK	Bevel Gear	2

Also available in  
**STAINLESS STEEL**  
Please see page 20 & 21

### PORTABLE CARTS & CARRY HANDLES

Model	Portable Cart for
PR-1175-11	1175-6-100
PRP-1175-11	1175-6-100
PR-1175-15	1175-6-200
PRP-1175-15	1175-6-200



### DIMENSIONS

SIZE	A	B	C	D	Crank E	Elec E	Air E	F	G
1	267	190	610	173	628	518	470	511	666
2	267	292	610	428	730	619	264	511	666
3	267	343	610	480	781	670	622	511	666
4	267	394	610	530	832	720	673	511	666
5	267	508	610	644	946	373	787	511	666
6	267	508	508	644	946	373	787	454	559



FOR MORE INFORMATION PLEASE CALL ☐  
+44 (0) 1536 464 990 or visit [www.crireels.com](http://www.crireels.com)

# Large Capacity Manual & Motor Hose Reels

MOTOR

MANUAL

SPRING

## 1185 & 1195 Series

**1185 and 1195 Series hand crank and motor driven hose reels are designed to handle long lengths of large diameter hose for increased volume delivery.** The exclusive low profile outlet riser and open drum design provide a non-crimping, flat smooth hose wrap. The sturdy all welded "A" frame base provides exceptional strength to handle the extra weight without sacrificing performance, even in demanding mobile applications.



### 1185 SERIES Offers...

- ✓ Swivel Is Bolted Directly To The Bearing Housing
- ✓ Low Profile Outlet Riser & Open Hose Slot For Even Hose Wraps
- ✓ Horizontal Surface Mount Bearings Instead Of Flange Mounted
- ✓ Brake Assembly Provides Adj. Friction To Brake Or Lock The Drum
- ✓ One Piece All Welded Steel "A" Frame Construction

Drive Type

Manual

Motor

Media

Air,

Water

Oil

Grease

Fuel

Swivel material

Steel

Seal material

Nitrile

Also available in  
**STAINLESS STEEL**  
Please see page 20 & 21

### 1185 HAND CRANK MODELS // Air & Water & Oil

MODEL no hose	I.D.	O.D.	Length	I.D.*	O.D.*	Length*	BAR	Inlet F NPT	Outlet F NPT	KG	Size
1185-1124	38mm	51mm	15 m	32mm	44mm	23 m	41	1.5"	1.5"	35	1
1185-1524	38mm	51mm	23 m	32mm	44mm	30 m	41	1.5"	1.5"	37	2
1185-2020	38mm	51mm	20 m	32mm	44mm	24 m	41	1.5"	1.5"	32	3
1185-2024	38mm	51mm	30 m	32mm	44mm	38 m	41	1.5"	1.5"	43	4
1185-2028	38mm	51mm	38 m	32mm	44mm	55 m	41	1.5"	1.5"	49	5
1185-2528	38mm	51mm	46 m	32mm	44mm	67 m	41	1.5"	1.5"	55	6
1185-3324	38mm	51mm	53 m	32mm	44mm	68 m	41	1.5"	1.5"	70	7
1185-3328	38mm	51mm	76 m	32mm	44mm	99 m	41	1.5"	1.5"	77	8

### 1195 HAND CRANK MODELS // Air & Water & Oil

MODEL no hose	I.D.	O.D.	Length	I.D.*	O.D.*	Length*	BAR	Inlet F NPT	Outlet F NPT	KG	Size
1195-932	51mm	65mm	15 m	38mm	57mm	18 m	41	2"	2"	58	9
1195-1332	51mm	65mm	23 m	38mm	57mm	30 m	41	2"	2"	67	10
1195-2032	51mm	65mm	35 m	38mm	57mm	45 m	41	2"	2"	84	11
1195-1728	51mm	65mm	18 m	38mm	57mm	26 m	41	2"	2"	61	12
1195-2428	51mm	65mm	27 m	38mm	57mm	41 m	41	2"	2"	77	13
1195-3228	51mm	65mm	38 m	38mm	57mm	53 m	41	2"	2"	99	14

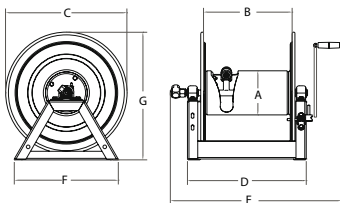
### MOTORS DRIVEN MODELS // Add the suffix to hand crank models above

Suffix #	Motor Type	Description	Extra KG
A	AIR #4 GAST	Comp. Air Motor	4
AB	AIR #6 GAST	Comp. Air Motor	8
E	ELECTRIC - 12V DC	1/3 HP	6
EB	ELECTRIC - 24V DC	1/2 HP	12
ED	ELECTRIC Explosion Proof	1/2 HP	12
EA	ELECTRIC Explosion Proof - 115V DC	1/2 HP	12
H	HYDRAULIC	End Ported 9/16-18 UNF	3
C	CRANK	Bevel Gear	2

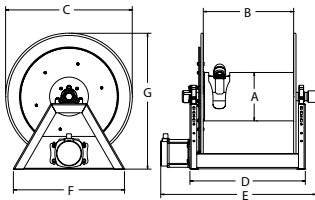
### DIMENSIONS

SIZE	A	B	C	D	Crank E	Elec E	Air E	F	G
1	267	292	610	292	611	589	617	564	635
2	267	394	610	535	713	766	720	564	635
3	267	292	508	650	827	881	833	498	549
4	267	508	610	636	827	881	833	564	635
5	267	508	711	636	827	881	833	622	737
6	267	635	711	764	954	1008	960	568	737
7	267	838	610	967	1157	1211	1163	622	635
8	267	838	711	967	1157	1211	1163	622	737
9	394	241	813	385	508	508	508	650	845
10	394	343	813	485	610	610	610	650	845
11	394	508	813	650	774	774	774	650	845
12	394	445	711	587	711	711	711	622	768
13	394	610	711	752	876	876	876	622	768
14	394	813	711	955	464	464	1079	622	768

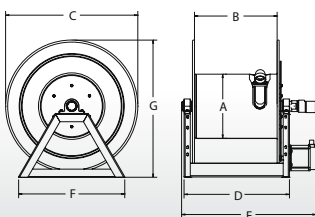
1185/1195 SERIES CRANK



1185 SERIES MOTOR



1195 SERIES MOTOR





# Large Capacity Dual Hose Reels

## 1275 Series

**1275 Series "Dual Hose" hand crank or motorized hose reels are designed for large capacity applications.** This series features dual plumbing with two swivel inlets and two low profile outlets that compliment the open drum slot and provide a non-crimping, flat smooth hose wrap. The industry preferred one piece all welded "A" frame design adds rigidity and strength while the positive gear drive rewind assures consistent trouble-free performance.

### 1275 SERIES Offers...

- ✓ Two Solid Brass BS Swivels & Two Outlet Risers For Dual Hose Applications
- ✓ One Piece All Welded Steel "A" Frame Construction
- ✓ Low Profile Riser & Open Drum Slot For Smooth, Even Hose Wraps
- ✓ Permanently Lub. Pillow Block Bearings Assure Smooth Rotation
- ✓ Swivel O-Ring Seals, Supported By Teflon® Spacers



MOTOR

MANUAL

SPRING

Drive Type

Manual

Motor

Media

Air

Water

Oil

Swivel material

Steel

Seal material

Nitrile

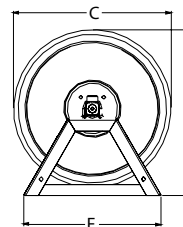
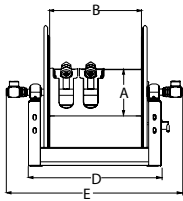
### 1275 HAND CRANK MODELS // Air & Water, oil & fuel

MODEL no hose	I.D.	O.D.	Length	I.D.*	O.D.*	Length*	BAR	Inlet	Outlet	KG	Size
1275-4-50	12mm	21mm	15 m	10mm	17mm	21 m	210	1/2"	1/2"	18	1
1275-4-100	12mm	21mm	30 m	10mm	17mm	42 m	210	1/2"	1/2"	19	2
1275-4-150	12mm	21mm	45 m	10mm	17mm	61 m	210	1/2"	1/2"	21	3
1275-4-200	12mm	21mm	61 m	10mm	17mm	91 m	210	1/2"	1/2"	25	4
1275-6-50	25mm	37mm	15 m	19mm	29mm	18 m	210	1"	1"	29	5
1275-6-75	25mm	37mm	23 m	19mm	29mm	33 m	210	1"	1"	31	6
1275-6-100	25mm	37mm	30 m	19mm	29mm	47 m	210	1"	1"	34	7
1275-6-150	25mm	37mm	45 m	19mm	29mm	61 m	210	1"	1"	40	8

### MOTORS DRIVEN MODELS // Add the suffix to hand crank models above

Suffix #	Motor Type	Description	Extra KG
A	AIR #4 GAST	Comp. Air Motor	4
E	ELECTRIC - 12V DC	1/3 HP	6
EB	ELECTRIC - 24V DC	1/2 HP	12
ED	ELECTRIC Explosion Proof	1/2 HP	12
EA	ELECTRIC Explosion Proof - 115V DC	1/2 HP	12
H	HYDRAULIC	End Ported 9/16-18 UNF	3
C	CRANK	Bevel Gear	2

Also available in  
**STAINLESS STEEL**  
Please see page 20 & 21



### DIMENSIONS

SIZE	A	B	C	D	Crank E	Elec E	Air E	F	G
1	159	203	445	340	490	543	495	385	476
2	159	305	445	441	592	644	597	385	476
3	159	457	445	594	745	797	750	385	476
4	159	610	445	746	897	950	900	385	476
5	267	343	508	484	-	770	720	480	273
6	267	343	610	484	-	770	720	518	664
7	267	508	610	650	-	785	885	518	664
8	267	508	711	650	-	785	885	573	764

