

# Compact Swivel Mount Hose Reels

## 100 & SM Series

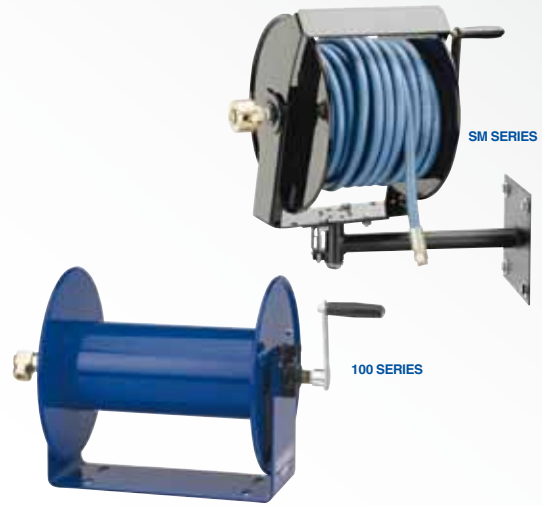
**100 Series & SM "Side Mount" hand crank hose reels are lightweight, compact, versatile reels.** Save time and effort while increasing the safety of your work environment. The sturdy "U" shaped frame and all steel construction make this an extremely robust yet compact reel. All listed models are supplied less hose. Stainless steel models are available.

### 100 SERIES Offers...

- ✓ Light Weight Compact Design
- ✓ Direct Hand Crank Action
- ✓ Brake Assembly Provides Adjustable Friction To Brake Or Lock The Drum

### SM SERIES Offers...

- ✓ Unique Hose Control Bar Keeps Hose From Slipping Off From Any Direction
- ✓ Forward-Weighted Design Ensures Rotation In Direction Of Use
- ✓ Optional 8-Position Swivel Mount Wall Mount Bracket With Lock Pin
- ✓ Brake Assembly Provides Adjustable Friction To Brake Or Lock The Drum



Drive Type

Manual

Media

Air

Water

Oil

Grease

Swivel material

Brass

Seal material

Nitrile

Also available in  
**STAINLESS STEEL**  
Please see page 20 & 21

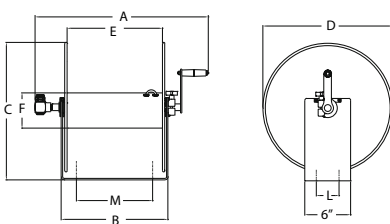
### 100 SERIES // Air & Water

MODEL no hose	I.D.	O.D.	Length	BAR	Inlet	Outlet	KG	Size
112-3-100	10mm	17mm	30 m	280	3/8"	3/8"	9	2
112-3-150	10mm	17mm	45 m	280	3/8"	3/8"	10	3
117-3-250	10mm	17mm	76 m	280	3/8"	3/8"	14	4
112-4-75	12mm	21mm	23 m	280	1/2"	1/2"	10	7
117-4-225	12mm	21mm	68 m	280	1/2"	1/2"	14	8
117-4-350	12mm	21mm	106 m	280	1/2"	1/2"	17	9
117-5-100	12mm	21mm	30 m	280	1/2"	1/2"	16	10

### 100 SERIES DIMENSIONS

SIZE	A	B	C	D	E	F	L	M
1	362	152	330	305	114	140	76	102
2	464	241	330	305	203	140	76	140
3	578	356	330	305	164	140	76	254
4	464	241	457	432	203	140	76	140
5	578	356	457	432	164	140	76	254
6	718	495	457	432	457	140	76	394
7	590	356	457	432	164	140	76	254

100 SERIES



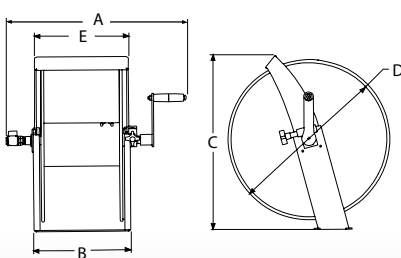
### SM SERIES // Air & Water

MODEL no hose	I.D.	O.D.	Length	BAR	Inlet	Outlet	KG no hose	Size
SM12-3-100-BGX	10mm	17mm	30 m	280	3/8"	3/8"	7	1
SM17-3-250-BGX	10mm	17mm	70 m	280	3/8"	3/8"	12	2
SM17-4-125-BGX	12mm	17mm	38 m	280	1/2"	1/2"	12	3

### SM SERIES DIMENSIONS

SIZE	A	B	C	D	E
1	464	260	343	305	254
2	483	260	470	432	254
3	483	260	470	432	254

SM SERIES



### SM SERIES MOUNTING BRACKETS

Pivoting base for wall mounting only. Heavy gauge steel construction, powder coated crinkle black, includes rigid arm with 8 position locking pivot base.



Bracket sold separately  
Part number: SMK-202