

# Heavy Duty Hose Reels

MODEL// SH-N375-BGX

## SH, MP & HP Series

**SH Series Super Hub™** spring driven hose reels, like the P Series, have a history of dependable performance. The larger chassis and frame accommodate longer lengths and larger diameters of hose. The dual axle support system increases the stability during operation, reduces vibration and strengthens the structural integrity of the reel.



Dual axle support with Super Hub™ for added strength



### SH, MP & HP SERIES Offers...

- ✓ Dual Axle Support Points To The Center Shaft With Super Hub™ Axle Support System
- ✓ Solid Brass BSP Swivel
- ✓ Heavy Gauge 1/4" Steel Base

MANUAL MOTOR SPRING

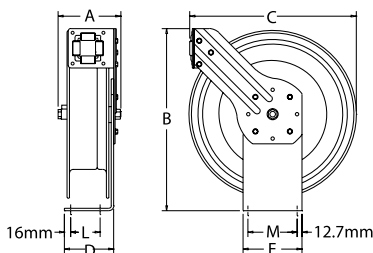
Drive Type	<b>Spring</b>
Media	<b>Air</b>
	<b>Water</b>
	<b>Oil</b>
	<b>Grease</b>
Swivel material	<b>Brass</b>
Seal material	<b>Nitrile</b>

Also available in **EZ-COIL**  
Available in EZ-Coil®  
Please prefix the desired reel with "EZ-"

Also available in **STAINLESS STEEL**  
Please see page 20 & 21

### DIMENSIONS

SIZE	A	B	C	D	E	L	M
1	222	533	498	152	152	102	127
2	235	533	498	152	152	102	127
3	248	533	498	152	152	102	127
4	286	533	498	152	152	102	127
5	222	641	584	152	152	102	127
6	235	641	584	152	152	102	127
7	248	641	584	152	152	102	127



### LOW PRESSURE // Air & Water

MODEL hose	MODEL no hose	I.D.	O.D.	Length	BAR	Inlet	Outlet	KG hose	KG no hose	Size
SH-N-160-BGX	SHL-N-160-BGX	6mm	12mm	18 m	21	1/4"	1/4"	23	20	1
SH-N-350-BGX	SHL-N-350-BGX	10mm	17mm	15 m	21	3/8"	3/8"	23	20	1
SH-N-360-BGX	SHL-N-360-BGX	10mm	17mm	18 m	21	3/8"	3/8"	24	21	1
SH-N-375-BGX	SHL-N-375-BGX	10mm	17mm	23 m	21	3/8"	3/8"	31	29	5
SH-N-3100-BGX	SHL-N-3100-BGX	10mm	17mm	31 m	21	3/8"	3/8"	32	27	5
SH-N-435-BGX	SHL-N-435-BGX	12mm	21mm	10 m	21	1/2"	1/2"	22	20	2
SH-N-450-BGX	SHL-N-450-BGX	12mm	21mm	15 m	21	1/2"	1/2"	25	21	2
SH-N-475-BGX	SHL-N-475-BGX	12mm	21mm	23 m	21	1/2"	1/2"	31	26	6
SH-N-4100-BGX	SHL-N-4100-BGX	12mm	21mm	31 m	21	1/2"	1/2"	37	30	6
SH-N-525-BGX	SHL-N-525-BGX	19mm	29mm	8 m	21	3/4"	3/4"	24	20	3
SH-N-535-BGX	SHL-N-535-BGX	19mm	29mm	10 m	21	3/4"	3/4"	26	21	3
SH-N-550-BGX	SHL-N-550-BGX	19mm	29mm	15 m	21	3/4"	3/4"	31	25	7

Maximum temp. 65°C Reels without hose can be used for air, water & oil

### MEDIUM PRESSURE // Air, Water & Oil

MODEL hose	MODEL no hose	I.D.	O.D.	Length	BAR	Inlet	Outlet	KG hose	KG no hose	Size
MPD-N-330-BGX**	MPDL-N-330-BGX	10mm	17mm	9 m	210	3/8"	3/8"	35	28	4
MP-N-340-BGX	MPL-N-340-BGX	10mm	17mm	12 m	210	3/8"	3/8"	29	24	1
MP-N-350-BGX	MPL-N-350-BGX	10mm	17mm	15 m	210	3/8"	3/8"	30	24	1
MPD-N-430-BGX**	MPDL-N-430-BGX	12mm	21mm	9 m	175	1/2"	1/2"	36	28	4
MP-N-435-BGX	MPL-N-435-BGX	12mm	21mm	10 m	175	1/2"	1/2"	28	23	2
MP-N-450-BGX	MPL-N-450-BGX	12mm	21mm	15 m	175	1/2"	1/2"	30	24	2
MP-N-525-BGX	MPL-N-525-BGX	19mm	29mm	8 m	88	3/4"	3/4"	28	23	2
MP-N-535-BGX	MPL-N-535-BGX	19mm	29mm	10 m	88	3/4"	3/4"	31	25	3

Reels with hose come with one wire braid hose suitable for air, water & oil with a maximum temp. 99°C

\*\*Reels are supplied with dual hydraulics hose

### HIGH PRESSURE // Air, Water, Oil & Grease

MODEL hose	MODEL no hose	I.D.	O.D.	Length	BAR	Inlet	Outlet	KG hose	KG no hose	Size
HP-N-160-BGX	HPL-N-160-BGX	6mm	12mm	20 m	350	1/4"	1/4"	32	25	2
HP-N-340-BGX	HPL-N-340-BGX	10mm	17mm	13 m	280	3/8"	3/8"	29	25	2
HP-N-350-BGX	HPL-N-350-BGX	10mm	17mm	17 m	280	3/8"	3/8"	30	24	2

Maximum temp. 99°C

